

# BRAIDWOOD GARDEN CLUB NEWSLETTER

## January 2022

**President:** John Tuckwell 0408 625 156 **Vice President:** Rosemary De Martin 0439 412 134  
**Secretary:** Jane Moore 4842 1494 **Treasurer:** Amanda Scott 0419 111 709  
**Newsletter Editor:** Margy Gardner 0412 616 352  
**Website** <https://braidwoodgardendub.org>



### **FEBRUARY MEETING - Thursday 10**

#### **A Talk by Stuart Read, Co-chair of the Australian Garden History Society**

**Where:** The Auditorium, Braidwood Servicemen's Club, Coronation Ave, Braidwood

**When:** 10.30 am for Tea, Coffee and biscuits,

Members M-Z please bring a plate of lunch to share.

**Covid:** Masks to be worn please (unless valid exemption and when eating and drinking).

**Topic:** A history of garden design using Australian native plants (1788-now)

"Weren't native gardens a thing in the 1970s? I don't even like native plants in a garden! Why should we care about native plants? How do 'Australian' gardens represent where, and what, we are, as gardeners? How has that evolved, since 1788?"

This talk is a skate over some 234 years of encountering, wondering, dabbling and using them in our gardens, our parks and getting to love them. And them influencing our gardens' design. It blows up a few myths, points out fads and phases when they were 'top of the pops', and suggests we have a way to go yet to treat our plants as we do exotic ones - be bold with how we use and treat them, and really 'own' and celebrate where we are gardening.

About Stuart

Stuart Read has over 30 years' experience in private and government sector work in design, policy and programs on landscape, parks, planning, horticulture and conserving, educating and managing natural and cultural heritage.

Stuart's 'day job' is with Heritage NSW, where he prepares nominations for State Heritage and Aboriginal Place listings, advice on management, grants, education and training through regular talks, seminars, assisting government managers, owners and stakeholders. He has contributed to diverse publications.

Stuart advises on adaptive reuse, change and giving heritage a viable, productive economic future. He is an expert in landscape heritage and garden history. His passions are lessons from old gardens, tracing global plant movement and managing cultural landscapes as part of our identity and economy. He is currently co-chair of the Australian Garden History Society.

### **Christmas Lunch / Party Report by John Tuckwell**



Our final event for 2021 was our Christmas Lunch / Party on 9 December in the Auditorium at the Braidwood Servicemens Club where 55 members enjoyed a delicious buffet lunch provided by Vanessa Bunn and her team at Vanilla Catering.

Activities included a Christmas decoration competition where the only criteria was that they must be home-made, principally

from natural materials, otherwise Members' imaginations were the only limitation. There was a healthy number of diverse entries with the winners determined by a popular vote using Christmas baubles placed in front of the preferred decoration. This led to a tied vote with Leonie Jolley and Bev Lightfoot the winners.

There was a well-supported plant swap table with numerous plants changing ownership for a gold coin donation.





Thanks to Mona Farm's support our raffle was even more special with the first prize being one night in 'The Lake House' at Mona Farm with a complimentary 3 course meal created by Tristan. Charmian Thomas was the lucky winner of this prize and there were other lovely prizes in the raffle and a Lucky door prize.

Finally, there was the ever-popular garden related quizzes. Rosemary De Martin and Bronwyn Johnson excelled themselves with their mind extending questions. These and the answers are reproduced below so all can learn a little from their research.



## =====

### Quiz Roundup – With Thanks to Rose de Martin & Bronwyn Johnson

#### **PART 1 – GARDENING QUESTIONS**

##### **Section 1 – 'Let's get fruity'**

1. What edible plant has various names – fuerte, bacon, cocktail, reed, opal, shepherd?  
A: *Avocado*
2. What nut is the oldest known human source of food from trees? *Walnut*
3. What is the enzyme found in pineapples which takes the mucus coating off our tongues and is then irritated by the acids? *Bromelain*
4. Name one of two countries to which the pineapple is native? *Brazil or Paraguay*
5. True or False: the Spanish city of Seville is using the fallen fruit from street plantings of oranges to generate electricity? *True*

6. What is the national fruit of India, Pakistan, Andorra and the Philippines? *Mango*
7. The hummingbird is the natural pollinator of which tropical fruit? *Pineapple*
8. To which plant family does the pineapple belong? *Bromeliad*
9. Native to Central America, a chayote, vegetable pear or mango squash is known here as...what? *Choko*
10. The above fruit of a vine belongs to which family? *Cucurbitaceae, or cucurbits*

##### **Section 2 – 'Roses'**

Name the rose named after an:

- |                                |                              |
|--------------------------------|------------------------------|
| 1. American President          | ( <i>Mr Lincoln</i> )        |
| 2. French President            | ( <i>Charles de Gaulle</i> ) |
| 3. Fashion Designer            | ( <i>Christian Dior</i> )    |
| 4. Fashion Designer            | ( <i>Lagerfeld</i> )         |
| 5. French Impressionist Artist | ( <i>Claude Monet</i> )      |

- |                                     |                               |
|-------------------------------------|-------------------------------|
| 6. Female American Singer           | ( <i>Barbra Streisand</i> )   |
| 7. British Musician                 | ( <i>Paul McCartney</i> )     |
| 8. British Children's Author        | ( <i>Roald Dahl</i> )         |
| 9. British Composer                 | ( <i>Benjamin Britten</i> )   |
| 10. Elizabethan courtier/adventurer | ( <i>Sir Walter Raleigh</i> ) |

##### **Section 3 – 'Hot Stuff'**

1. Are birds affected by hot chillies if they eat them?  
*No*
2. What produces the 'heat' in chillies?  
*Capsaicin*

3. What is the measure of heat in chillies called?  
*Scoville units*
4. Would you drink milk or water to alleviate that heat? *Milk*



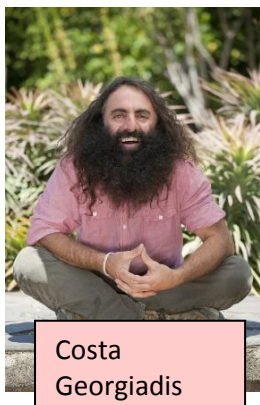
#### Section 4 – ‘Doing things with Ease’

The botanical names of these plants start with E’s – what are their common names?

- |                |                       |               |                   |
|----------------|-----------------------|---------------|-------------------|
| 1. E. cinere   | Eucalyptus - Blue Gum | 4. Epiphyllum | Cactus            |
| 2. Elaeocarpus | Blueberry Ash         | 5. Escholtzia | Californian Poppy |
| 3. Eriostemon  | Wax flower            | 6. Erigeronn  | Seaside Daisy     |

#### Section 5 - General and Random

1. In botanical terms, what are plants that bear flowers and seeds? *Angiosperms*
  2. If hibernation is winter dormancy, what is the summer equivalent? *Aestivation*
  3. In what season do eucalyptus trees predominantly shed their bark? *Summer*
  4. True or False? Sedum comes from the Latin “to sit”? *True*
  5. What is the common name of *Xanthorrhoea quadrangulata*? *Grass tree*
  6. Do you need to fix a leaky weir? Yes or No? *No*
  7. Roughly how long has the Holocene Period been going? *About 12,000 years*
  8. What defines the Holocene Period? (also known as the Anthropocene era) *The last era of warmth since the last ice age.*
  9. Name three different ways of propagating plants: *Seeds, layering, cuttings, cloning, root division*
  10. Which is larger – a grain of wheat or the human genome? *Wheat (about 5 times larger)*
  11. The yellow and orange pigments that provide autumn colour in deciduous trees and shrubs are present in their leaves when they sprout in spring – True or False? *True*
  12. Which Australian floral emblem’s name means ‘red flowering tree’ in the Eora language? *Waratah*
  13. *Dracaena fasciata*’s common name refers to the tongue of which relative? *Mother-in-law*
  14. What colour flowers do bees prefer? *Blue-purple colour range*
  15. What do we call a three-lobed leaf? *Trefoil*
  16. Generally speaking, do herbs come from woody or non-woody plants? *Non-woody*
  17. What colour flower does the Linen Flax (linum genus) plant have? *Blue*
- Which of the following is not a good companion plant for green beans?
18. Brussels sprouts; (b) cucumbers; (c) onions *Onions*
  19. What does SINENSIS mean in plant names? *Coming from China*  
What is the world’s fastest growing woody plant? *Bamboo*
  21. *Amorphophallus titanum* has the world’s largest flower (“largest unbranched inflorescence”).  
What is its second most notable attribute? *Its odour (smells like a rotting corpse)*
  22. Which garden tool is used for digging/chopping? *Mattock*
  23. We have learnt about epicormic growth, but where do we find lignotubers? *Underground*
  24. What does N, P, K stand for in a list of fertilizer ingredients? *Nitrogen, Phosphorus, Potassium*
  25. Who is the patron saint of gardeners (also of horticulture, florists, brewers and brides)? *St. Dorothy*



Costa  
Georgiadis



Paul Bangay



Trisha Dixon-Burkitt



Jamie Durie



Holly Kerr Forsyth



Jason Hodges



Judy Horton



Edna Walling



Monty Don



Jeremy/Jerry Coleby-Williams

### PART 3

#### CHRISTMAS QUIZ 2021 - Leaf Shapes

TABLE NAME: \_\_\_\_\_

Question: Botanical language has specific terms for different leaf shapes. Can you match the 10 leaves below to their correct botanical description? (Write the correct term beside its matching picture).

1.



2.



3.



4.



5.



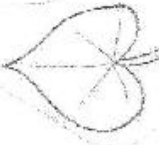
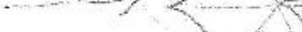
6.



7.



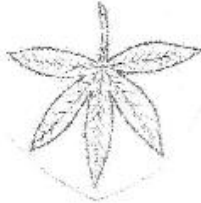
8.



9.



10.



Botanical terms:

spatulate; palmate; ovate; undulate; orbicular; lanceolate; lobed; cordate; falcate; trifoliate (aka trifoliate).

### PART 3 – LEAF SHAPES – ANSWERS

1. Spathulate (spoon-shaped)
2. Orbicular (rounded)
3. Undulate (wavy leaf margins)
4. Lanceolate (lance-shaped)
5. Ovate (egg-shaped)
6. Trifoliate or trifoliate (having 3 leaflets)
7. Lobed (regularly or irregularly divided into rounded segments)
8. Cordate (heart-shaped)
9. Falcate (sickle-shaped)
10. Palmate (evenly lobed in palm-like shape)

## **COMING EVENTS**

March 10-Bus Trip to Canberra  
Gardens  
April 14- Reidsdale & Majors  
Creek Gardens Visit  
May 12-South Coast Gardens  
June 9-Speaker-Tracey Bool,  
Garden Writer  
July 14-Truffle Farm Visit

August 11- AGM, Mona Farm  
September 8-Araluen & Majors  
Creek Garden Visit  
October 13-Coome Rd Gardens  
November 10- Southern  
Highlands Garden Visit  
December 8-Christmas Party  
Lunch

+++++

## **MELBOURNE BUS TRIP**

In our last newsletter, we asked for expressions of interest from members interested in going on a 6-day bus trip to attend the Melbourne International Flower and Garden Show. This would include visiting gardens on the way to and back from Melbourne, and having a day visiting some of the stunning gardens in the Dandenong / Yarra Valley / Mornington Peninsular areas.

After considering the feedback received, the committee decided that the uncertainty created by the Omicron variant made the organisation of such a trip problematical and also possibly led to the numbers expressing interest being below the threshold of making the trip viable.

The committee decided to postpone this idea until next year, when hopefully there will be more normality, or we will have at least more certainty of what we are dealing with.

## **BRAIDWOOD SHOW**

Barring changes in Covid restrictions, the 2022 Braidwood Show will be held on Saturday 5 March 2022.

The Garden Club will be again sponsoring some of the classes, namely:

*Section I - Vegetables*

Champion Vegetable Exhibit: \$50

*Section N – Flowers*

Grand Champion Exhibit Section N: \$50

*Section O – Potted Plants*

Best Exhibit Youth Section O: \$20

Grand Champion Exhibit Section O: \$50

The Show Society is still finalizing the details of the program and once completed, it will be uploaded to:

<https://www.braidwoodshow.com.au/>.

Welcome To Returning Member Marilyn Mills & New Member Elizabeth Ganter

## **WHAT'S ON**

**FEBRUARY 25-27, 2022 Friday – Sunday- Canberra Show**

**MARCH 4<sup>th</sup> -6<sup>th</sup>, 2022 Saturday & Sunday - Goulburn Show**

**MARCH 6<sup>th</sup> 2022 Sunday Tarago Show**

**MARCH 8<sup>th</sup> 2022, Tuesday** The Goulburn Garden Club Friendship Morning to be held on 8th March 2022.

Guest Speaker Mary Moody, author, gardener, TV presenter, journalist, tour guide. Let us hope that we will all be able to get together and celebrate 'Friendship through Gardens'. More information will be in later newsletters.

**MARCH 5<sup>th</sup>, 2022 Saturday - Braidwood Show**



# THE PLANT OF THE MONTH

By Kate Chinnick



**Agapanthus  
Praecox  
(African lily)**

- Native to southern Africa
- Strong growing perennials
- Grows to 1m tall
- Leaves are arching, strap-shaped and shiny green
- Stalks of large heads of blue ,white or mauve flowers in summer
- Prefers sun or some shade
- Ideal for edging or background plants
- Propagate from division in late winter or seed in spring
- Remove spent flowers and dead leaves at end of winter

## **What to do in the garden for February**

- Lift Tulips and Dutch Iris for storage in a cool dry place
- Tie Dahlias and tall Chrysanthemums
- Dead head Rhododendrons, Camelias and Azaleas, mulch and feed
- Sow seeds of annuals for planting out in April
- This humid weather promoted black spot - spray if necessary
- Remove weeds before they seed
- Obtain spring flowering bulbs
- Sow seeds of Asian Greens, Radish , Spinach and Turnips
- Remove vegetable plants as they finish cropping
- Apply liquid fertilizer fortnightly to vegetables
- Remove excess growth from Apples and Pears
- Trim Lavender and Rosemary
- Take semi hardwood cuttings and keep moist