

# BRAIDWOOD GARDEN CLUB

## NEWSLETTER AUGUST 2021



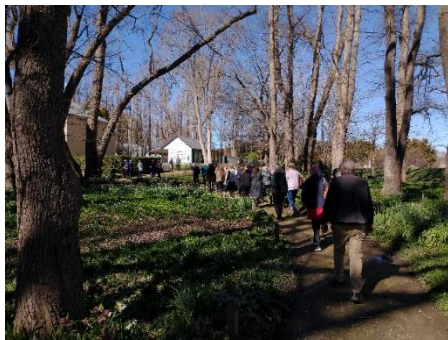
**President:** John Tuckwell 0408 625 156 **Vice President:** Rosemary De Martin 0439 412 134  
**Secretary:** Jane Moore 4842 1494 **Treasurer:** Amanda Scott 0419 111 709  
**Newsletter Editor:** Margy Gardner 0412 616 352 <https://braidwoodgardenclub.org>

### THURSDAY September 9

The planned meeting for this month has unfortunately been cancelled due to the Covid restrictions but we thank Marilyn Carle for offering to hold her floral workshop on that day. Perhaps for another time.

### Report of the AGM at Mona Farm

On 12 August, 56 members enjoyed a lovely occasion at the Mona Farm. The day commenced with a wander through the grounds at Mona with Daniel Gilmore, the new head gardener at Mona, explaining the improvements being made.



The formal proceedings commenced with the AGM, with the President John Tuckwell giving a summary PowerPoint presentation of his report (see attached) and Amanda Scott presenting the Treasurer's report (see below).



For the election of the new committee, Phillip Owen kindly took the chair. With every member of the committee agreeing to stand again for 2021-22 and with no other nominations, the committee was duly re-elected, with the members being:

President	John Tuckwell	Webmaster/Photographer	Fran Woods
Vice President	Rosemary De Martin	Catering	Charmian Thomas
Secretary	Jane Moore	Raffle Coordinator	Leonie Jolley
Treasurer	Amanda Scott	Publicity	Chris James
Newsletter Editor	Margy Gardner	General Member	Bronwyn Johnson

Members enjoyed a delicious three-course lunch catered for by Mona's new chef, Tristan Rebbettes and after lunch we had a fascinating presentation by our special guest speaker Tisha Dixon Burkitt.

**Welcome To New Members**  
**Margaret Brand, Suzanne Given, Sonia Horan & Christine Leddy**

## President's Report 2020-21

This past year has been another abnormal one as we got used to living with Covid-19 and enjoyed some good rains – dare I say it perhaps too much at times.

### Programme of Meetings

We continued to follow our tried and tested mix of local garden visits with car-pooling, bus trips to gardens further afield and talks or workshops.

We ended the previous year with our special 40th anniversary lunch and AGM here at Mona Farm and were very lucky to have Cheryl Adams (founder President from 1980-82), Erika Mordek (Secretary 1989-92), Dot Willcoxson (President 1999-2004) and Kate Chinnick (President 2010-13) who all entertained us with their recollections of their time at the helm of the Garden Club.

In September, we had a bus trip (along with a small convoy of cars) to Nowra, which was limited to 26 members due to the Covid-19 restrictions. Our first stop was the 7 acres of gardens at Merribee in Numbaa, with its magnificent clipped boxed hedges, a lovely lavender paddock and an 'old rose' garden among other delights and where we were treated to a garden tour by their head garden, Andrew Davidson. Then we visited a little-known gem of the Shoalhaven Heads Native Botanic Garden which is run by a band of enthusiastic volunteers. One lasting memory of the day was the sight of the burnt bushland en route which was quite shocking for those who had not ventured that way since the Black Summer fires.

For our October meeting we visited 3 gardens in Majors Creek, where we had to go in two groups of about 15 people because of the Covid-19 restrictions. The gardens included Fran Woods' 2-acre block just on the edge of town, with its fabulous 'borrowed' landscape outlook. It's a garden of gifted plants, natives, fruit trees and shade trees which has grown like topsy emanating from the house and grown in stages,. Next was 'Long Flat' owned by Bob Lane, with the garden imanged by Julia Hebbard, and it is a peaceful and impressive garden with 67 acres of mown lawn, huge dams and nearer the house, delightful garden beds. Finally, we visited 'Sherbrook' which is Chris and Brian James' Garden, where members who had seen it four years previously were astounded at how much work and growth had gone on. This is a garden with many plantings of flowering shrubs, perennials, annuals and deciduous trees, plus many 'garden art' pieces and vegetable beds established.

In November, we went to Mongarlowe where again we were in 2 groups. The theme for the day was 'blank canvas' as we viewed gardens that had grown from nothing ten years before or restarted after the fires. Some started at Charmian and John Thomas' Garden in Wilson St Braidwood, with its magnificent views of Dr Wilson's Hill. This lush, east-facing garden is a lesson in what can be achieved in eight years. Then, we had a fascinating visit to Tim Wimborne and Meraiah Foley's inspirational Mountain Pepper Orchard adjoining Budawang National Park which was recovering from being burnt out in the fires. Next was 'Hollow Wood', the garden of Karen & Frank Hansby, which is set in 43 acres with extraordinary views of Budawang National Park. They began establishing their lovely sweeping garden in 2012 and have various plantings of silver birch, dogwoods, Chinese Pistachio and olives, a vegie patch, with a beautiful trailing rose. The final garden was another visit to Donna Rickets along Charleys Forest Road. This garden is a real treat to visit, with numerous interesting and delightful plantings following her time working in a nursery and a thriving vegetable garden.

Our Christmas party was hosted by Sue and Ulli Tuisk at their historic property Palerang Homestead where 58 members enjoyed a wander through their delightful gardens with a glass of Champagne, bucks fizz, or orange juice. We were spoilt by Sweet Creation (members Alison Stutchbury and Sandra Small) who provided a special and delicious Christmas lunch, while our brains were frizzled by the garden quiz composed by Rosemary De Martin and Bronwyn Johnson who excelled themselves with some really great questions.

In February, we enjoyed an informative presentation by Catherine Watson (Director of 2WP garden tools) on 'picking the right garden tool and caring for it' at the Braidwood Servicemen's Club. A segment called the 'secateur challenge' invited members to bring in their current secateurs to see the way they cut and feel. As a special bonus, we visited Margaret and Wynn Jones's beautiful 7-acre parklike garden and property which they had just sold. This garden, understated in its charms, has relatively small formal beds close to the house, a generous orchard of fruit trees, and with the remainder being more like their own arboretum.

For March, we went out to the Mulloon Institute to be treated to a really informative talk on regenerative agriculture by Peter Hazel and then walk along the creek to see the work of the Malloon Institute in action. Afterwards, we went back to our garden in Braidwood where members had to suffer hearing about my experiences with no dig gardens and composting and see a new no dig bed being established.

In April, we had a visit to four Braidwood gardens. We started with Helen Lynch & Bronwyn Richards micro urban farm 'Wynlen House' with the opportunity to see how their business operated and taste some of their fresh produce growing in the garden. Then we visited Tony Gilbert's quirky and immaculate garden at 'The Old Rectory' which is delightful foliage garden with a lot of new plantings of ferns, bromeliads and other cool climate plants that give a lush subtropical feel, plus an amazing gazebo. After lunch at the Tuckwell's next door, the day was made complete with a look around Cheryl Hannah's delightful hidden garden located behind the fYREGallery. The garden was designed to be an extension of the gallery and is crammed full of interest, designed with beds and swales reflecting a colour pallet, including a gorgeous avenue of crab apple trees and a large statute called JESS.

For May, we visited 3 lovely gardens in Bombay. First was Carmen Byrne and Sarah Heine's garden at 'Lucille Farm'. This is a new garden in a gorgeous location and their plan to enhance the surroundings and provide more habitat for native birds and insects, with hundreds of trees and shrubs already (or about to be) planted. Next was Jeremy Campbell-Davys and Helen Geier's garden at 'Lisdaleen' and is a well-established garden dating from the 1860s with mixed varieties of both European and native trees and shrubs making this large garden a delight to wander. Our last call of the day was a return to Bronwyn Johnson's property "Ridgewood". Although containing many exotic species, the primary focus has been to cultivate a wide range of gorgeous native plants, with so many in bloom when we visited, again providing food and refuge for native birds and animals.

Unfortunately, our bus trip to the South Coast in June had to be cancelled due to wet weather. This was to visit Yuin elder Uncle Noel and wife Trish Butler to learn about eating and growing native foods and then visit Barry and Christine Matthews to see their garden and learn about growing and propagating native plants. We hope to reschedule this in May next year.

For July, our esteemed life member Kate Chinnick led a Rose Workshop at the Braidwood Servicemen's Club which was both extremely informative and enjoyable. It covered all aspects of growing roses and included a practical demonstration of pruning roses which was assisted by Margaret Tuckwell.

### **Other activities**

We have also been active in other areas, notably by helping improve gardens in the Braidwood area. This has included the establishment of a Sensory Garden in Ryrie Park as part of the playground area in October in association with QPRC who erected two small raised beds.

A big thanks to all those who donated plants to those most acutely impacted by the drought and the fires with a trailer and ute load of plants were delivered to Araluen on 25 October. This of course followed a delivery of plants to Nerriga in the previous year.

We also worked with QPRC to organise a tree walk in association with ACT Tree Week on 7 May entitled '*Braidwood's horticultural heritage – an autumnal amble through the town's tree-lined streets*'. Unfortunately, with the tour leader, Mary Appleby, being flooded in, it had to be cancelled. However, QPRC held the walk on 4 June in association with World Environment Day.

In my role as President, I continue to be on the steering group of a QPRC project called "*Keeping it Cool - Vegetation and Heat Adaptation Strategy*" which is in the progress of finalising a QPRC *Urban Forest Cooling Strategy*.

Our resident photographer, Fran Woods, printed a grouping of Greeting Cards featuring her stunning photos of the gardens we have visited and for members to purchase. Fran also redesigned our website, and we have a new domain name: [www.braidwoodgardenclub.org](http://www.braidwoodgardenclub.org).

### **Membership**

Membership continues to be very strong and is now at a new record level of 125 members, up by 22 members from the previous record level of 103 for 2019-20. The committee resolved to keep the membership rates unchanged at \$20, but increase postage of the newsletter to \$13 to cover increased costs.

### **Thanks**

A few thanks are in order. To Bendigo Bank staff, who do our banking and take our bookings. To Braidwood Buses and Rhonda in particular, we thank you for getting us to and from our destinations safely. To the Braidwood Servicemen's Club and Michelle Griggs for always having the meeting room ready for our events. The Club provides a venue for our Committee meetings as well as our talks and we always feel very welcome there. To Braidwood Rural for kindly offered Garden Club members a 10% discount on their garden lines and for agreeing to continue this in 2021-22. In turn they thank us for our custom.

Thanks also to Kate Chinnick for her contributions to our monthly newsletter, with her columns on Plant of the Month and "What to do" each month and for making our name badges.

The Garden Club is extremely lucky to have such a great committee of able and dedicated people who have continued to work as a true team and delivered the excellent programme I have just outlined, with every member contributing to the successful outcome. I would like to thank each and every one on the committee, namely: Rosemary De Martin (Vice-President and Instagram Queen), Margy Gardner (our outstanding Newsletter Editor, who has been in this role now for 7 years), Chris James (who is now our publicity officer) Bronwyn Johnson (our general roustabout, awesome event and quiz organiser), Leonie Jolley (brilliant Raffle Organiser), Jane Moore (our amazing Secretary), Amanda Scott (our ever reliable Treasurer), Charmian Thomas (Catering Officer extraordinaire) and Fran Woods (magical Web Manager and photographer). Lastly, Jennie Marston, who has resigned from the committee as they have moved to Bowral and who was always very willing and efficient. Thank you all.

Finally, thanks to all our members for their continued support of our club, because without you there would be no Braidwood Garden Club, also no yummy cakes and slices at morning teas.

In conclusion, we already have exciting plans for 2021-22, assuming we are re-elected and Covid-19 restrictions allow. I look forward to working with the Committee members and the broader garden club membership in the coming year to make our wonderful club even better.

Happy Gardening.

John Tuckwell, August 2021

### **MEMBERSHIP RENEWALS ARE NOW DUE**

**Please pay at the Bendigo Bank - BSB 633 000 - Account Number 118 346 444 & add 'Membership' in the reference. \$20 /year plus \$13 if you require a mailed Newsletter.**

BRAIDWOOD GARDEN CLUB			
FINANCIAL STATEMENT FOR THE PERIOD 1 AUGUST 2020 TO 31 JULY 2021			
AS PRESENTED TO THE ANNUAL GENERAL MEETING ON 12TH AUGUST 2021			
	2020-21	2019-20	2018-19
<b>STATEMENT BALANCE 01/08/20</b>	<b>\$4816.90</b>	<b>\$4,345.99</b>	<b>\$3,717.88</b>
<b><u>INCOME</u></b>			
MEMBERSHIPS	\$2,000.00	\$1,960.00	\$1,965.00
OUTINGS AND PRESENTATIONS	\$4,320.00	\$5,220.00	\$3,396.00
AGM	\$755.00	\$720.00	\$580.00
RAFFLES	\$1,147.90	\$718.10	\$844.00
SALES - CARDS	\$310.00	\$340.00	\$70.00
SALES - MAGAZINES	\$0.00	\$30.00	\$77.00
SALES - PLANTS	\$45.00	\$13.00	\$38.90
POSTAGE (NEWSLETTER)	\$175.00	\$121.00	\$143.00
DONATIONS	\$66.00	\$0.00	\$0.00
OTHER	\$0.00	\$0.00	\$0.00
<b>TOTAL INCOME</b>	<b>\$8,818.90</b>	<b>\$9,122.10</b>	<b>\$7,113.90</b>

<b><u>EXPENDITURE</u></b>			
BUS HIRE	\$990.00	\$2,695.00	\$1,870.00
OUTINGS AND PRESENTATIONS	\$3,780.51	\$2,958.00	\$1,931.81
AGM	\$1,682.19	\$888.43	\$775.64
ROOM HIRE	\$275.00	\$225.00	\$700.00
HOST/SPEAKER GIFTS	\$531.00	\$328.92	\$192.85
RAFFLES	\$216.49	\$230.70	\$199.95
MORNING TEAS	\$31.21	\$77.37	\$207.90
NEWSLETTER/PRINTING/ADMIN/WEB HOSTING	\$340.07	\$299.09	\$126.50
GCA AFFILIATION	\$40.00	\$75.00	\$75.00
GCA INSURANCE	\$180.74	\$177.20	\$218.14
DONATIONS/SPONSORSHIP	\$455.19	\$225.00	\$110.00
ADVERTISING	\$0.00	\$0.00	\$32.00
PURCHASE FOR RESALE	\$392.49	\$471.48	
DEPT OF FAIR TRADING	\$47.00		\$46.00
<b>TOTAL EXPENDITURE</b>	<b>\$8,961.89</b>	<b>\$8,651.19</b>	<b>\$6,485.79</b>
<b>TOTAL SURPLUS/LOSS</b>	<b>-142.99</b>	<b>\$470.91</b>	<b>\$628.11</b>
STATEMENT BALANCE 31/07/21	\$4,673.91	\$4,816.90	\$4,345.99

MEMBERSHIP @ 31/7/2021 - 125

Total includes 20 New Members  
3 Life Members, 13 Honorary Members. 4 Guest Members

\*\* An Increase of 22 Members from last year up over 21%

**INCOME NOTES:** Outings and Presentations include, Merribee and Shoalhaven Botanic Gardens, Mongarlowe, Mulloon, Palerang, Majors Creek, Wynlen House, Xmas Party, Bombay Gardens, Catherine Watson and Rose Workshop

**EXPENDITURE NOTES:** Outings and Presentations - Refunds for non-attendance, Garden Entrance fees, catering and material costs

\*\* Of note are the refunds for cancelled Sth Coast Bus trip of which 4 are outstanding - totalling \$160.00

Subsidies to 3 events - see note \*\*\*

AGM - Catering and Venue hire

Admin - General record keeping, printing and Web Hosting

Donation - Bulk of this went to the Children's Sensory Garden

Purchase for re-sale - Cards

\*\*\* Sturdy Financial position has meant that we were able to subsidise the Bus trip, Christmas Party and AGM by \$10.00 person.

Represents a \$30.00 return on your \$20.00 membership = GREAT VALUE!!



## **Notes On The Presentation by Trisha Dixon Burkitt** by Bronwyn Johnson

Our speaker Trisha Dixon Burkitt's presentation was based around her beautiful photos of landscapes and gardens, both here and overseas. Trisha grew up at Bungonia and remembers weekend walks to the Shoalhaven River and Bungonia Gorge. She knows Braidwood well as places along the Shoalhaven share many historic links.

Trisha's 'home territory' - the Monaro - is a place of contrasts: cold and heat, drought and flood, snow and bush fires. She recalled the words of famous pastoralist Sir Sidney Kidman, who said that we should regard dry seasons as the norm, and good seasons the exception. Good times nurture the soul - we need to remember them. In this environment, water is "like money in the bank".

Trisha's own garden at "Bobundara" has a basis of hedges and tough plants which will survive drought, as well as a 'wild garden' section. Reliable standards abound, such as snow pear, larkspur, old roses, sweet peas and Queen Anne's Lace.

The esteemed Australian gardener Edna Walling believed that gardens should be designed not only as distant views but to be lived in, inviting us in and leading us on. Her gardens were designed around contrasts, with formal areas as well as wild areas, paths leading us from one area to a contrasting area, always with creative use of spaces. Edna designed with an artist's eye, taking inspiration from Italy, with sensitive use of structures, such as a gate leading us into a contrasting space. Gardens are not simply about flowers but also design - especially in tough conditions, where design elements provide the basis of the whole garden.

Outstanding gardens present us with a range of design ideas. Edna Walling designed the Walled Garden at Dame Elisabeth Murdoch's property "Cruden Farm" near Melbourne. This property also has the much-admired main driveway edged by more than 100 tall white Lemon-scented Gums (*Corymbia citriodora*).

Our location today "Mona Farm" has also used the broader 'landscape as garden' with thoughtful design in the placing of trees, fences, lawns and water.

Dry gardens seen in western Queensland were very much "of their place", using elements which don't necessarily require a lot of water - small reflecting pools, rocks, trees, space and vistas. Whether coast or desert, design a garden with what you have - good design creates impact using the elements which are already part of the landscape.

Landscape architect Fleur Flanery and her husband have a working property outside Yass. Some years ago they started changing their garden plants to those which could survive without water for more than eight weeks in high heat and which had a tolerance of 60° C, particularly Mediterranean plants and Australian natives. Looking to the future, the big issue here is about the 'adaptability of landscapes'.

Gardens are essentially about the people who plant them - and we can learn much from their work, for example:

Edna Walling's "borrowed landscapes" - include something from the landscape beyond your own garden.

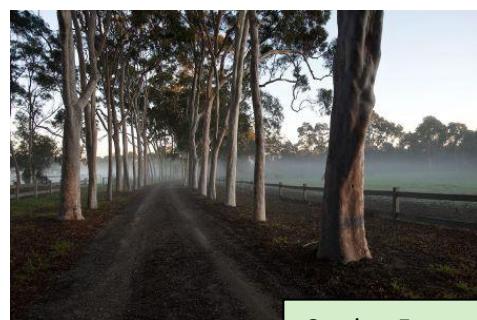
Paolo Pejrone's humble welcome to his garden - "it is what it is" - be true to what is there.

Modern gardens in dry places, e.g. Italy, Greece - use the natural landscape arising from its historical origins, existing elements of gravel and stone, and local plants - olives, lavender, cypress, grasses.

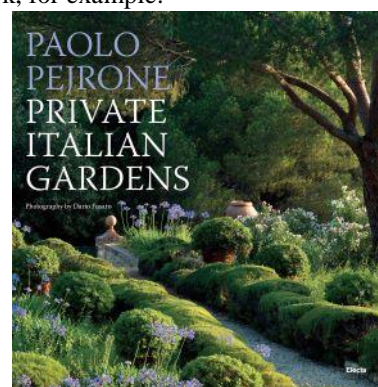
Use of local materials - fallen sticks, rocks, timber - and whatever local plants you have.

Even with limited plants and materials, something beautiful can be achieved by thoughtful design and discipline.

A gardener's inspiration may come from many and varied sources - memories, landscapes, people, literature. Trisha's first inspiration was *The Wild Garden* by William Robinson. She also mentioned the writings of Patrick Leigh Fermor (Greece); the Durrells (Corfu); Australian poet Betty Casey/Litchfield; Banjo Paterson's *The Man from Snowy River* - as well as children's books such as *The Secret Garden* (Frances Hodgson Burnett) and *The Silver Brumby* (Elyne Mitchell)



Cruden Farm



### **\$25 Voucher to Provisions**

During the course of the AGM event, Mona Farm announced they would like to offer a \$25 voucher to each member to spend at Provisions and also offer a night's accommodation at Mona Farm. Both are extremely generous and greatly appreciated. We are currently working through the logistics of how to get a voucher to each member, but you should receive it shortly. The night's accommodation at Mona Farm will be the main prize at the Christmas Party's raffle.

### **Braidwood Rural Discounts**

Braidwood Rural has kindly continued to offer Garden Club members a 10% discount on their garden lines during 2021-22.

The way this operates is that the garden club provides a list of all members to Braidwood Rural without any contact details and when you go to Braidwood Rural you ask for the discount and they look you up on the list.

## **Draft Program for 2021-22**

Assuming Covid-19 restrictions do not prevent us from meeting, the draft program for the remaining of the financial year is as follows:

14 October – Braidwood gardens visits

11 November – Trip to Tarago gardens

9 December – Christmas Party

10 February 2022 – Stuart Read, Co-Chair, Australian  
Garden History Society as speaker

10 March – Bus trip to Canberra public gardens

14 April – Local gardens visits in Reidsdale (tbc)

12 May – Visit to South Coast and Noel and Trish  
Butler (tbc)

9 June – Speaker

14 July – Visit to Truffle Farm at Durran Durra

11 August – AGM and speaker

## **Your chance to comment on the draft QPRC Urban Forest Cooling Strategy**

The draft QPRC Urban Forest Cooling Strategy has been developed to support Council in continuing to provide housing and infrastructure, for our growing population while ensuring our urban centres are healthy and attractive environments for residents and wildlife. This follows on from the results of the QPRC Surface Heat Mapping Study which found that over 85% of urban land in the region fell within an urban heat island (2 degrees hotter than surrounding natural areas). The draft Strategy provides Council with coordinated, local, and practical actions to manage the urban forest and educate and inform the community, which includes a vision that: 'Council, businesses and the community value and actively care for an urban forest that is resilient and fairly distributed, and provides a cooler, healthier environment for people and wildlife'. Five main goals within the strategy have also been developed to work towards achieving this, namely:

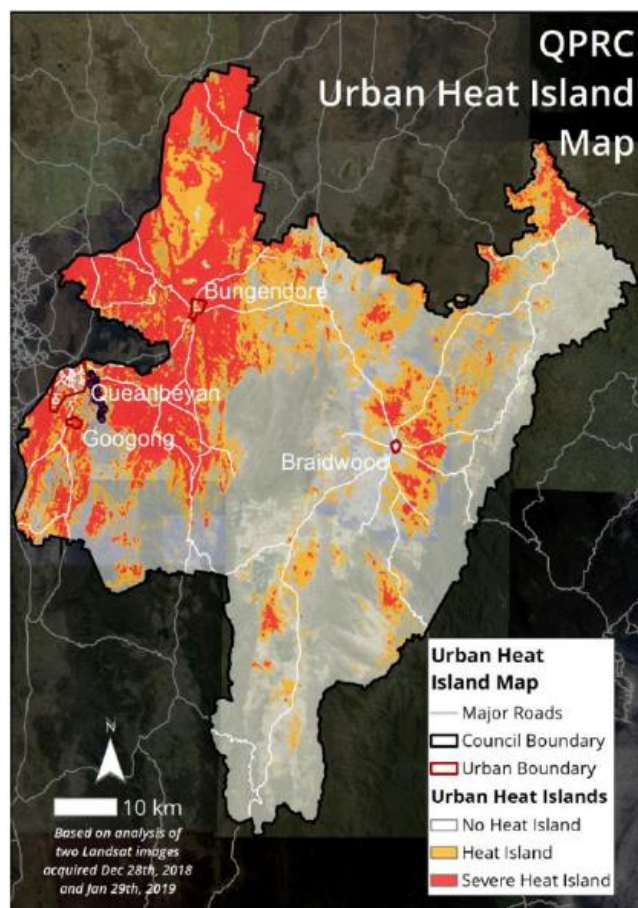
- A resilient urban forest
- A fairly distributed urban forest
- A cooler, greener urban environment
- Increased biodiversity and tree canopy
- An actively managed urban forest

To achieve the Strategy's vision and goals, 32 actions have been grouped into five key strategies, including:

- Strategy 1: Build awareness and encourage participation in urban greening.
- Strategy 2: Expand data collection and monitoring of the urban forest.
- Strategy 3: Coordinate tree and vegetation planting and management.
- Strategy 4: Review planning policy and development controls.
- Strategy 5: Increase Council capacity in urban forest management.

An implementation plan has also been developed to support Council and the community manage and implement this Strategy.

If you want to comment on the draft strategy, go to: <https://yourvoice.qprc.nsw.gov.au/draft-urban-forest-cooling-strategy>. The public exhibition closes on the 1 September 2021.



-----

**<https://braidwoodgardenclub.org>**

The Garden Club website is a valuable resource for all club activities with a photo gallery, membership forms, past newsletters and much more.

Check it out and wander through the multitude of beautiful photos taken by our website manager Fran Woods.

## THE PLANT OF THE MONTH

By Kate Chinnick



### **Helleborus orientalis**

(Lenten Rose)

- Native to Greece, Turkey & the Caucasus
- Evergreen clump forming
- Dark green leaves
- Trim back leaves before flowering
- Beautiful flowers from winter to spring in all colours
- Frost hardy and a good cut flower
- Prefer part shade or shady areas
- Prefers moist, cool soil
- Propagate from division or seed in Autumn
- All Hellebores are poisonous
- Check for aphids

### **What to do in the garden for September**

- Tie Sweet Peas to supports
- Dahlia clumps left in the ground can be divided now
- Plant new perennials & pot on any cuttings
- Winter flowering Sasanqua Camellias can be pruned after flowering
- Feed Camelias, Rhodo's, Azaleas, Daphne, Pieris and Ericas with old animal manure
- Plant and repair lawns
- Still plant onion seedlings
- Tomato seedlings should not be planted yet (late frosts!!)
- Weeds are thriving, keep them clear
- Spray Peaches and nectarines for leaf curl at pink bud swell
- Prepare vegetable beds for spring planting
- Enjoy the spring bulbs